

SIGN REVIEW COMMISSION
SUMMARY OF MOTIONS

July 7, 1986

COMMISSION MEMBERS PRESENT: Jacque Shafer
 Ira Redner
 Lee Edwards
 Barb King

STAFF PRESENT: Abbie Philips
 Pam Sheldon

→ The meeting convened at 5:35 p.m.

APPROVAL OF MINUTES:

The minutes of June 2, 1986 were approved with changes.

REGULAR AGENDA:

#SP-86-3 Swan Mountain Resort, Identification and Directional Signage for
Condominium Project with a Clubhouse, 0059 Soda Ridge Road, Summit
Cove (Tate)

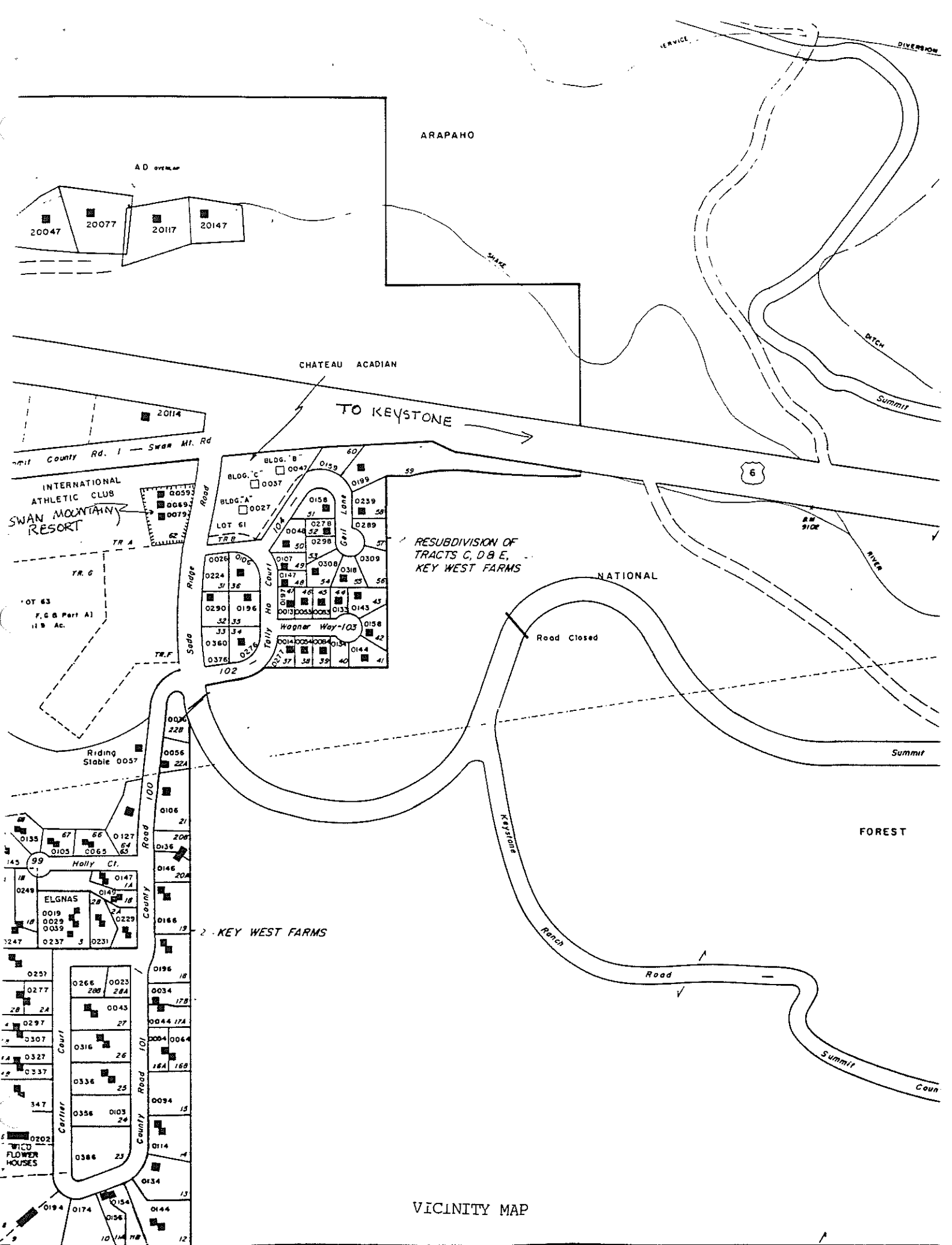
MOTION: Ira Redner moved to:

- o Approve only two ten square foot condominium identification signs, one for each entrance to the project. The existing 23 square foot sign would have to be reduced to 10 square feet.
- o Approve a reduced version of sign #4 (sales and tours identification sign). This sign should be reduced to four square feet.
- o Approve a repainted sign #5 (barn directional sign) which coordinates with the other project signage.
- o These approvals are subject to the condition that to scale drawings of each sign and its location must be submitted to the planning department for final approval.
- o Deny sign #8 (sales and tours sign).

Jacque Shafer seconded the motion, the motion carried 3-0 with Barb King abstaining.

Discussion Items:

----- Miscellaneous



ARAPAHO

AD OVERMAP

20047 20077 20117 20147

CHATEAU ACADIAN

TO KEYSTONE

INTERNATIONAL ATHLETIC CLUB
SWAN MOUNTAIN RESORT

RESUBDIVISION OF TRACTS C, D, B, E, KEY WEST FARMS

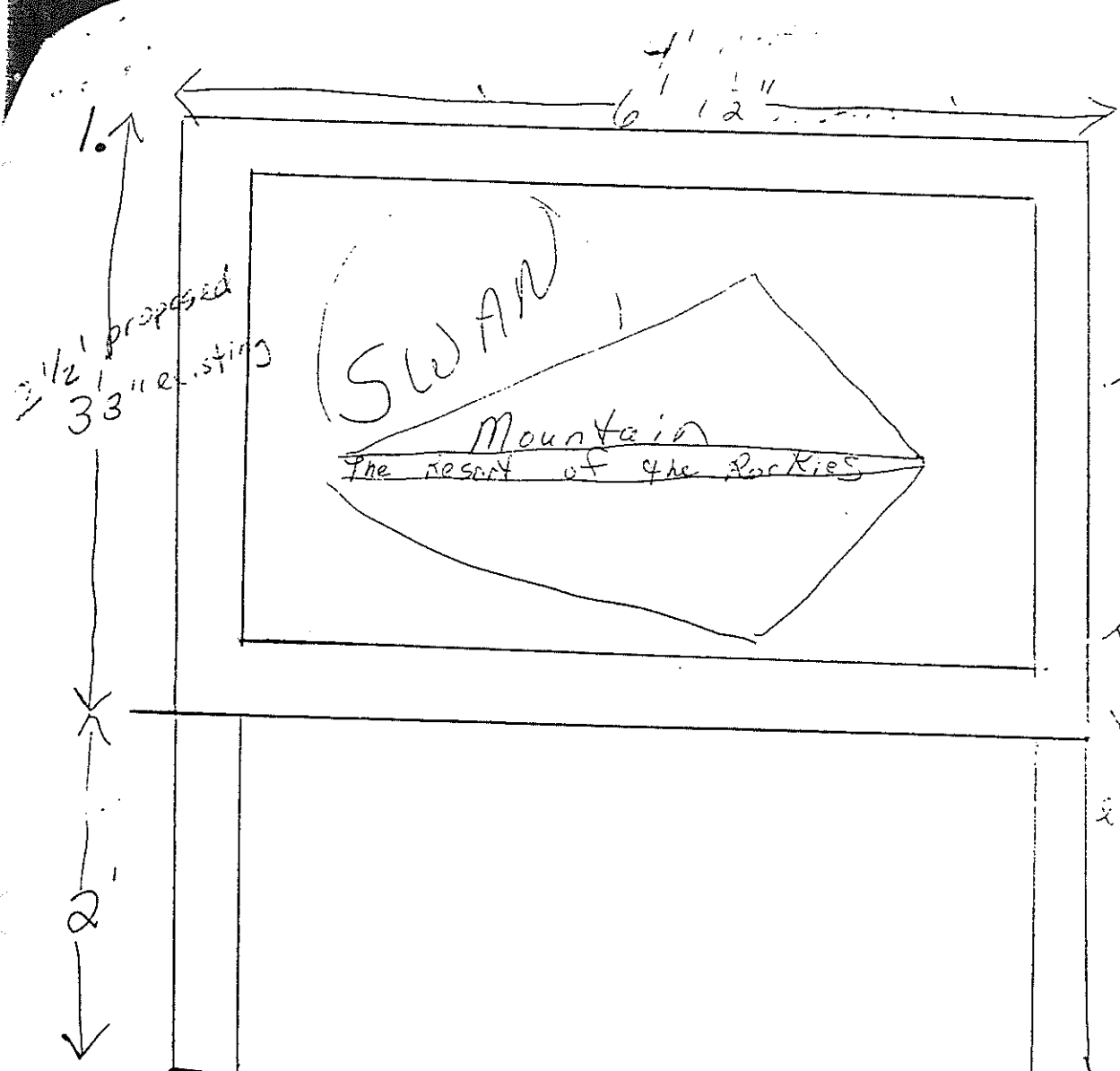
NATIONAL

Road Closed

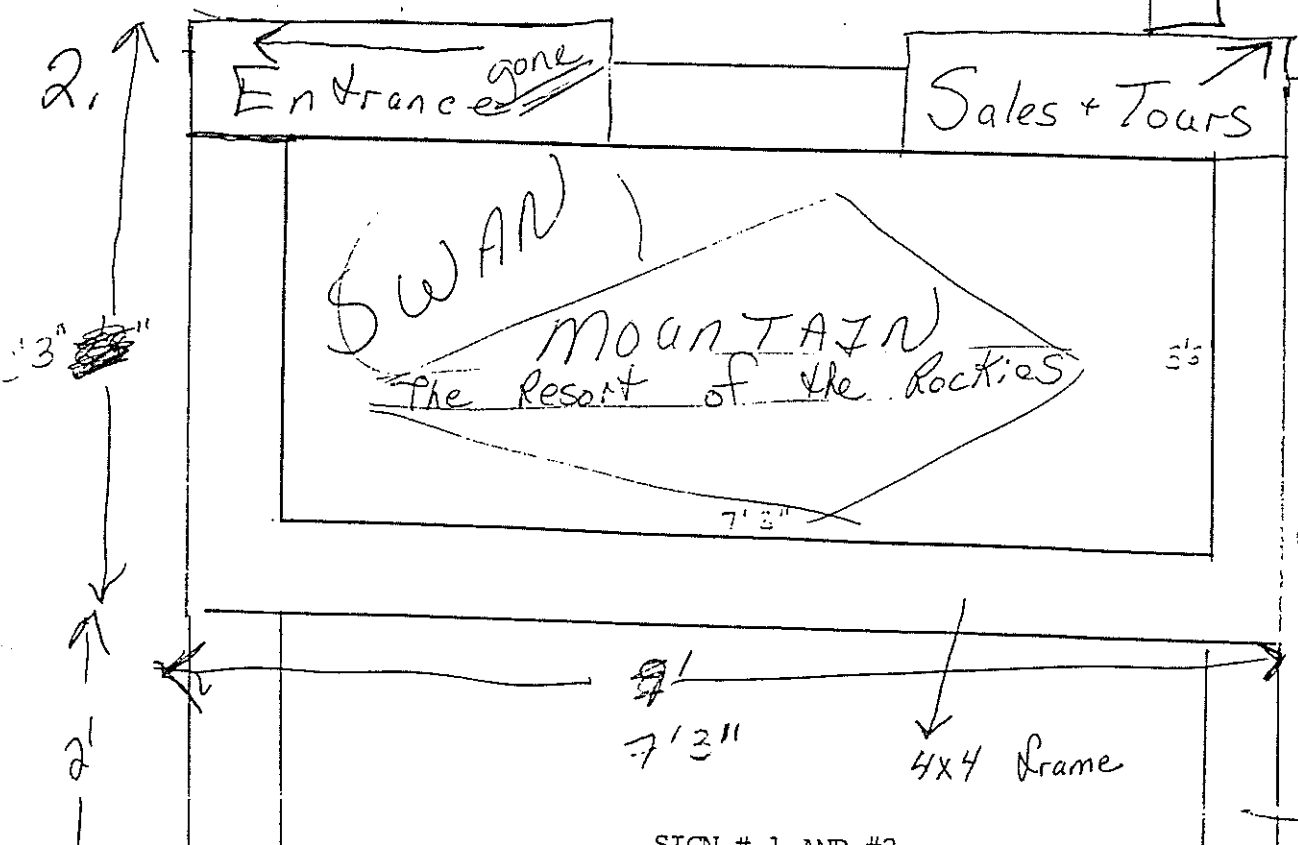
FOREST

KEY WEST FARMS

VICINITY MAP

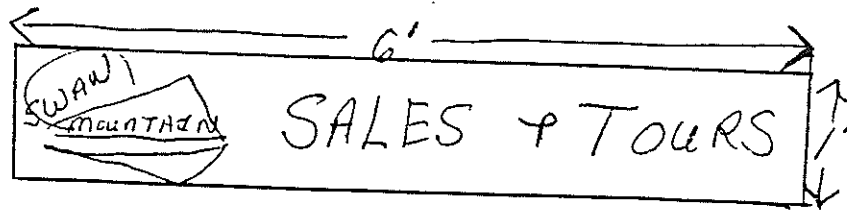


cut down to 10 S.F.
 This sign on
 original application
 The signs are
 blue with black
 white letters + 10



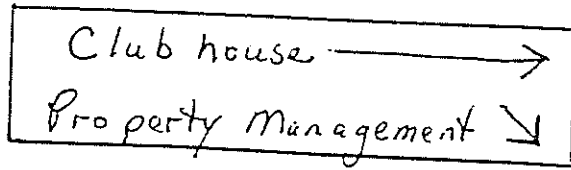
This sign
 on original
 application.

4.



This sign above door at square gray building (sales office)

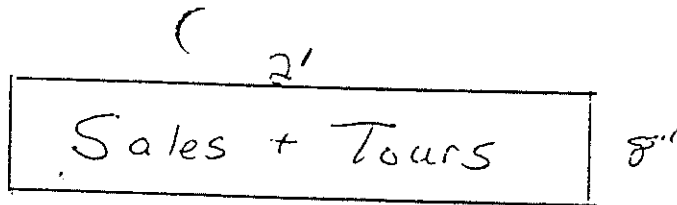
5.



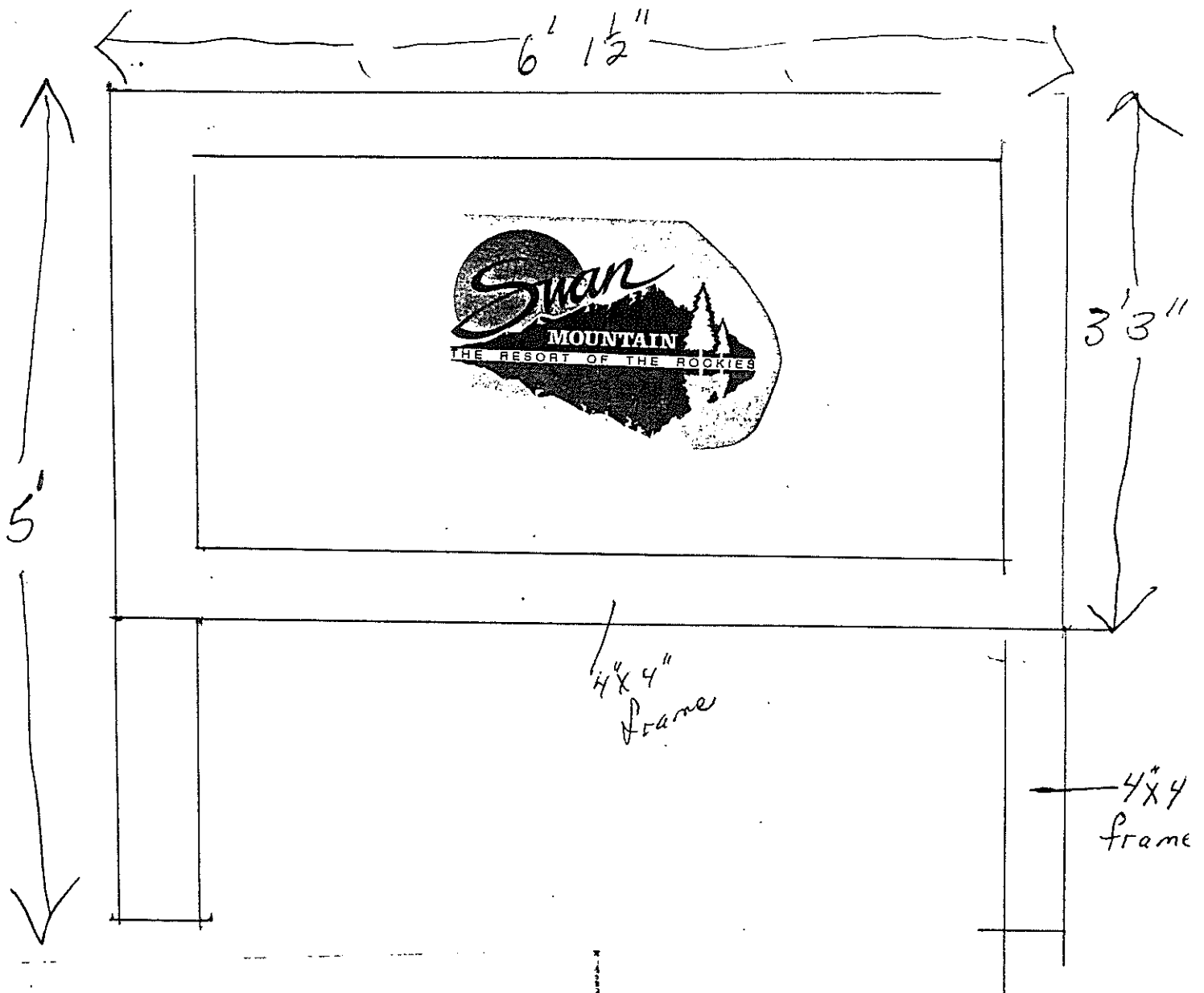
This sign hangs from top of opening in barn walkway.

SIGN # 3, 4, AND 5

8.



This sign located on east of small gray office by road.



SAMPLE OF LOGO

PROponent: _____

DESCRIPTION: 7-D. (Condo Sign)

AREA: _____

TYPE: _____

HEIGHT: 5'

LIGHTING: none

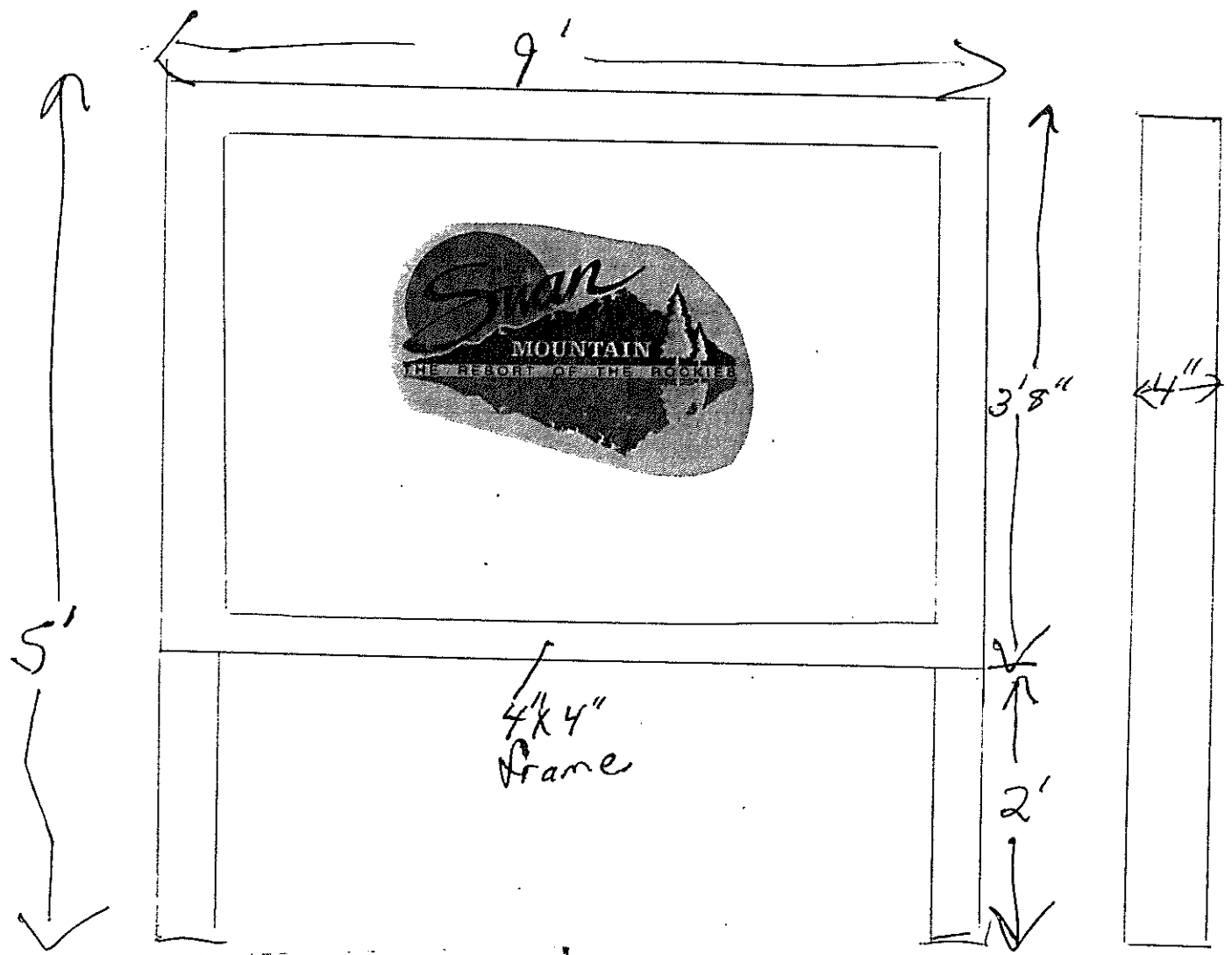
FACING: North East

COLORS: Blue Black White + Gray

LETTERING: see logo

LOCATION: 57 SCR # 4

COMMENTS: sign has been in position for five years - just changed color of sign



PROponent: _____ #

DESCRIPTION: J.P. (Canda Sign)

AREA: _____

TYPE: _____

HEIGHT: 5'

LIGHTING: none

FACING: North East.

COLORS: Blue, Black, white & gray

LETTERING: see logo

LOCATION: 59 SCRT 4

COMMENTS: sign has been in same position for five years just changed color of sign.